

INTRIM®



Skirting | Architrave | Mouldings | Wainscoting | Wall & Ceiling Panelling | VJ Board

Interior Design 2026 Style Guide:
Modern Coastal



Contents

Introduction	4	Room-by-Room Design Guide	14	Ordering Information	24
What Defines Modern Coastal Style	6	Featured Profiles: Modern Coastal Mouldings	16	FAQs	24
Design Principles & Philosophy	8	Introducing Nova Vita Range	18	About Intrim Mouldings	25
Colour Palette & Material Selection	10	Case Studies	20		
Modern Coastal vs Other Styles	12	How to Achieve the Modern Coastal Look	22		



Introduction: The Modern Coastal Aesthetic

Modern Coastal is more than an interior design style—it's a way of living. It captures the essence of Australian beachside life: the relaxed pace of coastal mornings, the play of sunlight on water, the organic textures of windswept dunes, and the effortless sophistication of homes designed to embrace their environment rather than dominate it.

Modern Coastal showcases clean lines, a minimalist aesthetic, and natural materials to create serene, beach-inspired interiors. This comprehensive style guide explores how to achieve this aesthetic through thoughtful material selection, refined colour palettes, and the architectural details that transform ordinary rooms into light-filled coastal sanctuaries.

Inside This Guide

- The design principles that define authentic Modern Coastal style interiors
- How to select the right moulding profiles, sizes, and finishes
- Room-by-room Modern Coastal interior design ideas for creating cohesive interiors
- Real Australian project case studies with product specifications
- Expert advice on achieving this aesthetic within your budget
- Technical details for architects, designers, and specifiers

Modern Coastal represents the evolution of Australian coastal design—stripped of literal nautical references, refined to its essential elements, and elevated through quality materials and craftsmanship. It's coastal living distilled: light, natural materials, soft neutral palettes, and uncluttered spaces.



What Defines Modern Coastal Style

Unlike traditional coastal styles of anchors, stripes, and literal beach motifs, Modern Coastal embraces sophisticated restraint. It references the coast through feeling rather than iconography—the sense of spaciousness you experience standing on an empty beach, the calming rhythm of waves, the sun-bleached simplicity of weathered timber.

This is coastal design refined for contemporary living. Clean architectural lines, minimal ornamentation, and a material palette drawn directly from the Australian shoreline—driftwood greys, sand neutrals, seafoam blues, and the brilliant whites of the sun on breaking waves.

Core Characteristics

Luminosity – Maximising natural light through white walls, large windows, minimal treatments, and reflective surfaces creates the hallmark brightness of coastal homes.

Natural Materiality – Timber, linen, rattan, stone, and organic fibres provide warmth and texture without visual weight. Materials feel honest, unprocessed, and connected to nature.

Soft Sophistication – Restrained colour palettes in whites, soft blues, warm greys, and natural tones create calm, cohesive spaces that feel effortless rather than styled.

Clean Architecture – Simplified moulding profiles with contemporary proportions, minimal decorative detail, and horizontal emphasis echo the low coastal horizon line.

Indoor-Outdoor Flow – Seamless material transitions, consistent colour palettes, and operable walls dissolve boundaries between interior and landscape.

Textural Depth – Layered natural textures like woven pendants, linen upholstery, raw timber, stone, and organic textiles prevent minimalism from feeling stark or cold.



The Australian Context

Modern Coastal is distinctly Australian, shaped by our unique coastal climate, outdoor lifestyle, and design heritage. It references the weathered-timber beach shacks of Byron Bay, the relaxed sophistication of Bondi and Manly, the sun-drenched elegance of Gold Coast waterfront homes, and the coastal heritage of fishing villages that have evolved into design destinations.

This isn't imported Mediterranean coastal, New England coastal, or Californian coastal—it's uniquely informed by Australian light quality, landscape character, and the way we live in relationship with the ocean.



Who Chooses Modern Coastal?

This aesthetic resonates with homeowners seeking timeless over trendy, calm over cluttered, and quality over quantity. It appeals to young families building near the beach, downsizers seeking relaxed luxury, design-conscious renovators updating heritage coastal properties, and city dwellers craving tranquillity regardless of proximity to the ocean.

Modern Coastal works beautifully in both coastal settings (where it feels authentic and climate-appropriate) and in inland settings (where it brings a sense of escape, serenity, and connection to nature).

Design Principles & Philosophy

Achieving an authentic Modern Coastal look requires understanding the fundamental design principles that underpin it.

Light as Primary Material

Natural light isn't merely illumination in Modern Coastal homes—it's the primary design material. Spaces are oriented to capture morning sun, walls are painted in reflective whites, window treatments are minimal (sheer linens or left bare), and room layouts prioritise sight lines to windows and outdoor spaces.

Artificial lighting reinforces this philosophy: soft, warm-toned bulbs; natural material pendants in rattan or linen; and fixtures that disappear rather than dominate. Avoid ornate chandeliers or industrial metals—lighting should feel organic and understated.

Horizontal Emphasis

The coastal landscape is defined by horizontal lines—the ocean horizon, long stretches of beach, and low vegetation. Modern Coastal interiors echo this through:

- Horizontal wall battening and shiplap rather than vertical
- Low-profile furniture with clean, elongated silhouettes
- Linear lighting fixtures and horizontal artwork placement
- Skirting and architrave profiles with subtle horizontal detailing
- Benchtop and shelf lines that emphasise width over height

This horizontal emphasis creates visual calm and makes rooms feel more spacious and connected to the landscape.

Restrained Material Palette

Modern Coastal succeeds through material discipline. Rather than mixing dozens of textures and finishes, select 4-5 core materials and repeat them consistently:

Foundation: White painted timber (walls, ceilings, mouldings)

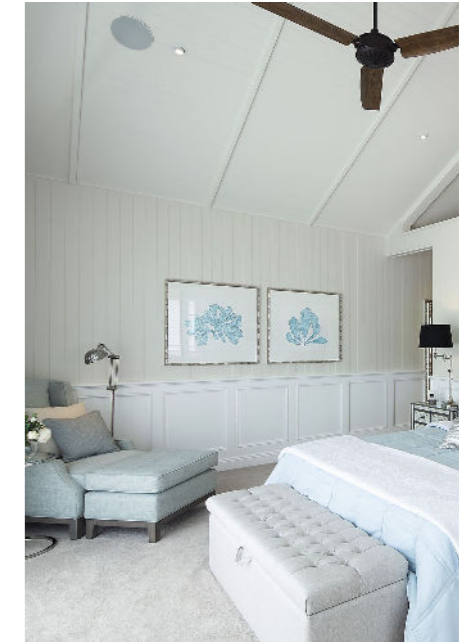
Warmth: Natural timber (flooring, furniture, battening)

Softness: Linen or cotton (curtains, upholstery, bedding)

Texture: Rattan or jute (lighting, rugs, baskets)

Accent: Stone or concrete (benchtops, flooring, feature walls)

This restraint prevents visual chaos and allows each material's natural beauty to register clearly.



Edited Simplicity

Modern Coastal embraces the “less is more” philosophy without becoming sterile minimalism. Spaces feel curated rather than empty—each piece serves a purpose and contributes to the overall aesthetic.

Avoid: Excessive accessories, busy patterns, collections displayed en masse, heavy window treatments, and ornate details.

Embrace: Negative space, single statement pieces, natural greenery, organic forms, and handcrafted objects displayed individually.

Connection to Nature

Biophilic design principles are inherent to the Modern Coastal aesthetic. Bring nature indoors through:

- Natural material selection (timber, stone, organic fibres)
- Living plants (fiddle leaf figs, eucalyptus, palms, coastal natives)
- Natural colour palettes inspired by the landscape
- Views framed as living artwork
- Indoor-outdoor material continuity

This connection to nature enhances wellbeing, reduces stress, and reinforces the coastal lifestyle philosophy.

Colour Palette & Material Selection

The Modern Coastal colour palette is drawn directly from Australian coastal landscapes. Think early-morning light on white-sand beaches, the soft blues of calm bays, weathered driftwood, and sun-bleached grasses.

1. Foundation Whites

White forms the base of every Modern Coastal palette, but not stark, clinical whites. Choose warm, soft whites with subtle undertones:

- Warm Whites: Slight cream or ivory undertones prevent coldness
- Off-Whites: Soft greyed whites add sophistication
- Antique Whites: Gentle aged quality suits heritage properties

Application: Walls, ceilings, all mouldings (skirting, architraves, wall battening), cabinetry, and joinery.

Specification: Use premium low-sheen or matte finishes. Gloss reads too contemporary and shows imperfections.

2. Neutral Foundations

Soft neutrals add depth and prevent all-white spaces from feeling flat:

- Warm Greys (Greige): Perfect balance of grey and beige—pebble, dove, mushroom
- Coastal Blues: Duck egg, powder blue, seafoam, soft aqua (use sparingly as accents)
- Sand Tones: Natural beige, biscuit, linen, oatmeal
- Driftwood Greys: Weathered timber-inspired grey-browns

Application: Feature walls, soft furnishings, accent colours in artwork or accessories.

3. Natural Timber Tones

Timber provides essential warmth that prevents Modern Coastal from reading cold or sterile:

- Pale Timbers: White oak, American oak, bleached timber, pale pine
- Natural Rattan: Honey-toned woven textures in lighting and furniture
- Aged Timber: Weathered, sun-bleached character for feature pieces

Application: Flooring, furniture, ceiling beams, wall battening (if not painted white), pendant lights, decorative objects.

4. Accent Notes

Use sparingly for moments of visual interest:

- Black: Matte black hardware, window frames, lighting fixtures (minimal)
- Soft Blue-Green: Coastal eucalyptus, sage, soft teal
- Terracotta: Warm clay tones in ceramics and textiles (subtle)

Materials



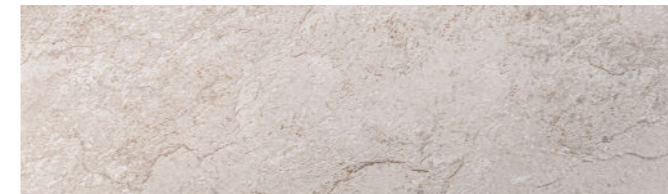
1. Timber

- Pale oak or pine flooring (matt finish, never high gloss)
- Rattan and cane furniture (pendants, chairs, headboards)
- Timber ceiling beams or battening (creates architectural interest)
- Natural timber window frames and doors



2. Soft Textiles

- Linen (curtains, upholstery, bedding—the hero textile)
- Cotton (natural, breathable, relaxed)
- Wool (subtle texture in rugs and throws)
- Jute and sisal (natural fibre rugs, baskets, decorative objects)



3. Hard Surfaces

- Natural stone (limestone, travertine, honed marble)
- Polished concrete (soft grey, subtle texture)
- White painted timber (mouldings, wall panelling, joinery)
- Ceramic tiles (white subway, soft blue-greys, natural stone looks)



4. Metals

- Brushed brass (warm, soft finish—not shiny gold)
- Matte black (minimal use—hardware, tapware)
- Avoid: Chrome, polished stainless steel, ornate metals



Modern Coastal Design vs Other Styles

Understanding how Modern Coastal differs from related styles helps you achieve an authentic aesthetic.

Modern Coastal vs Modern Hamptons

Similarities: Both embrace white palettes, natural materials, and relaxed elegance.

Key Differences:

- Hamptons features more traditional and ornate moulding profiles, decorative details, higher skirting (185-230mm), and traditional proportions
- Modern Coastal uses simplified and refined profiles, minimal ornamentation, contemporary clean lines, and elegant, soft curves
- Hamptons leans formal; Modern Coastal leans casual
- Hamptons references the American East Coast; Modern Coastal is distinctly Australian

When to Choose: The Modern Hamptons style suits traditional homes, formal spaces, and heritage properties. Modern Coastal suits contemporary architecture, relaxed lifestyles, and minimalist preferences.

Modern Coastal vs Modern Contemporary

Similarities: Both feature clean lines, minimal ornamentation, and contemporary profiles.

Key Differences:

- Modern Contemporary can be cooler, sharper, and more industrial
- Modern Coastal adds warmth through natural materials, a softer palette, and organic textures
- Modern Contemporary might use concrete, steel, and high-contrast blacks
- Modern Coastal prioritises natural timber, linen, rattan, soft neutrals

When to Choose: Modern Contemporary suits urban environments and architectural statements. Modern Coastal suits coastal locations, family homes, and spaces prioritising warmth and comfort.

Modern Coastal vs Scandi Coastal

Similarities: Minimal palettes, natural materials, light-filled spaces..

Key Differences:

- Scandi Coastal features cooler greys, darker timber accents (black timber), hygge-inspired cosiness
- Modern Coastal uses warmer whites, pale timbers, beachy rather than cabin-like
- Scandi suits colder climates; Modern Coastal suits warm temperatures (i.e., the Australian climate)

Modern Coastal



Modern Hamptons



Modern Contemporary



Scandi Coastal



Room-by-Room Style Guide



Living Rooms

Anchor the space with a low-profile linen sofa in white, natural, or soft grey. Layer with textured cushions in whites and sand tones. Add a large jute rug, driftwood coffee table, and natural timber shelving displaying ceramics and greenery. A statement rattan pendant adds a textural focal point overhead.

Feature one wall with horizontal battening painted white—this creates architectural interest without visual clutter. Keep opposite walls clean and simple to maintain airiness.



Kitchens

Modern Coastal kitchens balance functionality with relaxed elegance. Choose white cabinetry with simple profiles—avoid ornate details. Introduce warmth through timber or rattan bar stools, floating timber shelves, and natural stone or honed marble benchtops.

A white subway tile backsplash laid horizontally (brick pattern) or horizontal shiplap timber provides subtle texture. Matte black or brushed-brass hardware adds a refined detail. Large windows without upper cabinetry maximise light.



Bedrooms

Modern Coastal bedrooms balance functionality with relaxed elegance. Choose white cabinetry with simple profiles—avoid ornate details. Introduce warmth through timber or rattan bar stools, floating timber shelves, and natural stone or honed marble benchtops.

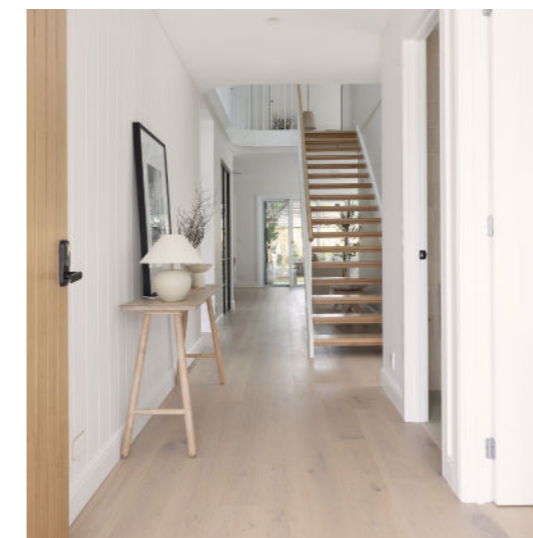
A white subway tile backsplash laid horizontally (brick pattern) or horizontal shiplap timber provides subtle texture. Matte black or brushed-brass hardware adds a refined detail. Large windows without upper cabinetry maximise light.



Bathrooms

Modern Coastal bathrooms feel like spa sanctuaries. Use white subway tiles on wet walls, a timber vanity with a stone top, and soft blue-grey paint on the remaining walls. A large frameless or timber-framed mirror reflects light. Woven baskets provide texture whilst hiding toiletries.

Keep hardware simple—brushed-brass or matte-black tapware. Add greenery (eucalyptus or a small potted plant), rolled white towels, and minimal accessories.



Hallways & Entries

Entries set the coastal tone immediately. A V-groove lining board or board-and-batten wall treatment creates instant architectural interest. A simple timber console holds keys and display items (a ceramic bowl, greenery, and coastal photography). Above, a large mirror bounces light and expands space.

Practical elements like coat hooks or bench seating suit coastal lifestyles—somewhere to shed sandy shoes and wet towels.

Featured Profiles: Modern Coastal Mouldings



Intrim SK52 Skirting & Architrave

Profile Character: Brings elegance and sophistication to Modern Coastal & Coastal Scandi homes. With smooth curves and balanced proportions, this profile offers a refined edge that complements light, airy, and architecturally inspired spaces.

Available Sizes: 66mm up to 285mm high, and 18mm thick.

Best Applications: Primary skirting and architrave for Modern, Coastal, and Minimalist interiors. Suitable for both residential and commercial projects

Materials & Finish: Primed FJ Pine, Primed MR MDF, American Oak or Flexible Polyurethane (for curved walls).



Intrim SK392 Skirting & Architrave

Profile Character: Clean, elegant lines with subtle detailing to complement Modern interiors. It is designed to create a sophisticated, cohesive transition between walls, floors, and openings, enhancing the space without overpowering other design elements.

Available Sizes: 90mm up to 285mm high, and 18mm thick.

Best Applications: Ideal skirting and architrave for Modern Contemporary and Art Deco interiors. A great fit for both new builds and renovations aiming for a fresh, timeless look. Suitable for living rooms, bedrooms, hallways, and feature spaces

Materials & Finish: FJ Pine, MR MDF, American Oak, and Flexible Polyurethane (for curved walls)



Intrim SK366 Skirting & Architrave

Profile Character: Brings elegant, effortless style to your interiors. A versatile profile that perfectly complements Coastal and Contemporary interiors, adding a polished architectural finish to any space.

Available Sizes: 90mm up to 285mm high, and 18mm thick.

Best Applications: Primary skirting and architrave throughout coastal homes. Suits both new builds and contemporary renovations

Materials & Finish: Primed FJ Pine, Primed MR MDF, American Oak or Flexible Polyurethane (for curved walls).



Intrim LB100 Lining Board

Profile Character: Tongue and groove lining board designed to replicate the aesthetic of VJ panelling, but in a lightweight format. Easy to install, especially on ceilings or in tight spaces where manoeuvrability matters.

Available Sizes: 107mm wide and 12mm thick.

Best Applications: Wall or ceiling lining board for Modern Hamptons, Modern Farmhouse and Coastal Scandi interiors. Suitable for both internal and external applications, including alfresco areas, porches, and wet areas. Can be installed vertically with a chair rail for a classic beadboard look, horizontally for a modern shiplap aesthetic, or as a single focus wall behind a bed.

Materials & Finish: Primed FJ Pine



Intrim Shadowline® SK800 Skirting & Architrave

Profile Character: An Intrim exclusive moulding to achieve a clean, flush finish. Ideal for Modern Coastal interiors in both residential and commercial applications, it delivers a sleek architectural look without the need for aluminium angles. Up to 30% faster to install compared to traditional shadowline methods using P50 or L-beads.

Available Sizes: 65mm up to 260mm high (visible height) and 12mm thick, with a 10mm x 6mm shadowline groove. Options available for both 10mm and 13mm plasterboard.

Best Applications: Primary skirting and architrave in Modern and Contemporary interiors. Suits both residential and commercial projects. Suited to areas with carpet or polished concrete flooring. A 2-piece system is also available for areas with timber or tiled floors.

Materials & Finish: Primed MR MDF

Introducing Nova Vita®

The Nova Vita® Collection is Australia's first softly contoured flush finish skirting specifically designed for contemporary Australian coastal homes. Launched in April 2026, Nova Vita represents the evolution of Modern Coastal design: clean lines, refined proportions, and effortless sophistication. Meaning "New Life" in Latin, Nova Vita breathes fresh energy into interior design. These profiles are engineered for the way Australians live today—open-plan spaces, indoor-outdoor flow, minimal ornamentation, and timeless quality over fleeting trends.



Intrim Nova Vita SK810 Skirting

Profile Character: A refined alternative to shadowline skirting. This flush finish skirting system is designed to create a seamless architectural transition between the wall and floor.

Available Sizes: 135mm to 285mm high.

Available Thicknesses: 12mm (for 10mm plasterboard), 15mm (for 13mm plasterboard).

Best Applications: Popular in Modern Coastal homes, Scandi-inspired spaces, and Contemporary interiors seeking understated luxury. Suited to areas with carpet or polished concrete flooring. A 2-piece system is also available for areas with timber or tiled floors. Pair with Intrim Nova Vita DJ810A/B 2-in-1 Architrave & Door Jamb for a fully integrated finish throughout.

Materials & Finish: MR MDF Primed



Intrim Nova Vita SK820 Skirting

Profile Character: A concave profile designed as a premium alternative to shadowline skirting. Well-suited to Modern Coastal homes, Scandi-inspired spaces, and Modern interiors seeking an organic, understated architectural finish.

Available Sizes: 135mm to 285mm high.

Available Thicknesses: 12mm (for 10mm plasterboard), 15mm (for 13mm plasterboard).

Best Applications: Delivers a clean, minimalist aesthetic ideal for Contemporary interiors. Works well in areas with carpet or polished concrete flooring. A 2 piece system is also available for timber & tiled flooring applications. Complete the look with Intrim Nova Vita DJ820A/B 2-in-1 Architrave & Door Jamb for a fully integrated finish throughout.

Materials & Finish: MR MDF Primed



Intrim Nova Vita SK830 Skirting

Profile Character: A minimalist curved profile delivering a softer shadowline skirting alternative. It creates a clean, Minimalist aesthetic sought after in Contemporary style homes.

Available Sizes: 135mm to 285mm high.

Available Thicknesses: 12mm (for 10mm plasterboard), 15mm (for 13mm plasterboard).

Best Applications: Suited to Modern homes, Coastal interiors, and Minimalist spaces. Can be used in areas with carpet, polished concrete, timber or tiles. A 2-piece system is available for timber & tiled floors. Add alongside the Intrim Nova Vita DJ830A/B 2-in-1 Architrave & Door Jamb for a fully integrated finish throughout.

Materials & Finish: MR MDF Primed



Modern Coastal Interior Design Australia Case Studies

Burleigh Beach Shack

Style: Coastal Hamptons Living

Builder: Front Porch Properties

Products Used: SK366 Skirting Boards, SK392 Architraves, WB01 Wall Batten, LB100 Lining Board,, IN33 Inlay Mould, SB05 Skirting Block.

The Result: Layered with V-groove panelling, coffered ceiling detailing and beautifully proportioned trim, this Beach Shack feels bright, relaxed, and effortlessly refined—capturing a coastal aesthetic that is both timeless and quietly luxurious.

“From the moment you enter you are greeted by V-groove panelling on the walls and ceiling which adds an element of charm and detail. Making your way through to the kitchen and living areas you will be floored by the amount of gorgeous detailing including the true star of the home, the coffered ceiling... Throughout the rest of the home, there are plenty of details to catch your eye including the wall battens that created a gorgeous feature in the bedroom as well as large detailed SK366 skirting boards and SK392 architraves that dressed up the floors, walls and doorways throughout. This Burleigh Beach Shack incorporates everything you could possibly want in a Coastal home. We’re obsessed and we know you will be too.” – Rachael Turner.



Coastal Paradise Villa

Style: Aussie Coastal Living

Builder: Geoff Heath Building Pty Ltd

Products Used: LB100 Lining Board

The Result: The neutral furnishings and calming colour palette, paired with Intrim mouldings, has created a home that feels welcoming, has a relaxed coastal aesthetic, and is effortlessly stylish.

“I chose to use Intrim Mouldings for my new build as they were the only company on the market that offered VJ style lining boards in lengths of 5.4m. This made it much easier to install on the cathedral ceilings as I did not want any joins. It also helped that these lining boards could be used in our alfresco area and wet areas as they’re manufactured from FJ pine, rather than MDF. It made the process of ordering materials easier as I could get everything I was looking for from one place.” – Geoff Heath.



How to Achieve the Modern Coastal Look

Step 1: Define Your Colour Palette

Begin with paint selection—this drives all subsequent decisions.

Base White: Choose one warm white for walls, ceilings, and all mouldings

Accent Neutral: Select one soft grey, blue-grey, or sand tone for feature walls or soft furnishings

Timber Tone: Decide on pale (white oak) or warmer (natural oak) for flooring and furniture

Resist the urge to introduce multiple colours. Modern Coastal succeeds through restraint.

Step 2: Select Moulding Profiles

Choose profiles appropriate for your ceiling height and aesthetic preference:

Coastal Contemporary: SK52 throughout

Classic Coastal: SK366 throughout (recommended)

Refined Elegance: Nova Vita range

Order samples to see profiles in your space before committing to a full order.

Step 3: Plan Architectural Features

Decide where to add coastal character through architectural details:

Essential: Skirting and architrave in chosen profile

High Impact: One feature wall with horizontal battening or board-and-batten

Premium Addition: V-groove wall or ceiling panelling in a shiplap style as a detail in main living areas

Don't over-complicate—one or two feature moments create impact. Too many compete for attention.

Step 4: Coordinate Flooring

Flooring anchors the entire palette:

Optimal: Pale timber (white oak, bleached oak) in matte finish

Contemporary Alternative: Polished concrete in soft grey

Budget-Friendly: Pale timber-look luxury vinyl planks

Avoid dark timbers, high-gloss finishes, and busy patterns.

Step 5: Layer Natural Textures

Prevent all-white spaces from feeling stark through textural layering:

Lighting: Rattan or linen pendant lights

Soft Furnishings: Linen sofa, cotton bedding, wool throws

Flooring: Jute or sisal rugs

Accessories: Ceramic vases, woven baskets, timber bowls

Each element adds warmth whilst maintaining visual calm.

Step 6: Curate Lighting & Accessories

Lighting makes or breaks the aesthetic:

Prioritise: Large-scale natural material pendants (rattan, linen)

Avoid: Ornate chandeliers, industrial metals, and task lighting as a feature

Accessories should feel edited and intentional:

Display: Single stems in ceramic vases, stacked books, and one sculpture

Avoid: Collections, excessive frames, decorative clutter

Step 7: Edit Ruthlessly

Final step: Remove anything that doesn't contribute to the coastal calm.

Ask of each item: Does this bring me joy? Does it feel coastal? Is it necessary?

Modern Coastal is as much about what you remove as what you add.



Ordering Information

Modern Coastal Sample Box

You can order individual profile samples (we have a '4 for free' coupon where you just pay a flat postage rate) OR you can select from our curated sample boxes.

Get a Design Consultation

[Book Appointment](#) if you need assistance choosing a profile for your interior style.

* Register and set up an account on INTRADE to order directly, or advise your builder or architect of your chosen profile.

Set Up an Account

[INTRADE: Register to access](#) pricing and to order directly, or advise your builder or architect of your chosen profile.

Find a Professional Installer Near Your

[Location Finder](#)

Frequently Asked Questions

Can Modern Coastal Home Decor Work Beyond Beachside Locations?

Yes, Modern Coastal decor can work really well in suburban homes, city apartments, or rural properties—not just beachside locations. It has evolved from a literal, “nautical” theme into a refined, versatile design approach focused on light, natural textures, and an airy atmosphere that can bring a serene, holiday-like vibe to any space.

How Do Wall Panelling Profiles Shape a Contemporary Coastal Interior?

Wall panelling profiles define a coastal interior by combining a beach house style with the clean lines and refined texture of modern design. They transform flat walls into architectural features, adding depth, warmth, and a sense of “indoor-outdoor” flow.

What Skirting Boards Suit Modern Coastal Home Designs?

At Intrim, we recommend the following skirting profiles to achieve a Modern Coastal interior design: SK366, SK800, SK52, SK392, Nova Vita SK810, Nova Vita SK820, and Nova Vita SK830.

How Do You Choose the Right Skirting and Architrave Proportions for Coastal Spaces?

Choosing the right skirting and architrave sizes for coastal spaces involves balancing ceiling height, room scale, and the desired level of “coastal” style. Proportions for coastal homes often feature taller skirting boards (135mm–230mm) to create a premium, relaxed feel, typically paired with 90mm–115mm wide architraves.

Why Use Timber-Based Mouldings Instead of MDF in a Modern Coastal Home Design?

We recommend primed FJ Pine timber mouldings over MDF due to their resistance to moisture-related swelling in high-humidity areas. Timber is also incredibly durable and has a natural, organic aesthetic that complements Modern Coastal design.



Intrim is Australia’s leading manufacturer of architectural interior mouldings. As a 100% Australian-owned business, we’ve been crafting premium skirting boards, architraves, and decorative mouldings for nearly 40 years.

Our Commitment:

Impeccable quality and craftsmanship
 Delivery on time and in full
 Australia-wide delivery and technical support
 Sustainable manufacturing practices

© 2026 Intrim Group Pty Ltd.