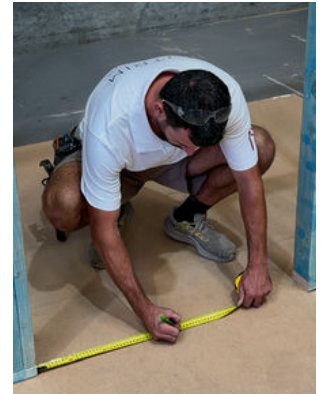


STEP 1: DOOR JAMB SET-OUT BEFORE SKIRTING INSTALLATION

Door jamb widths must be established before skirting is installed.

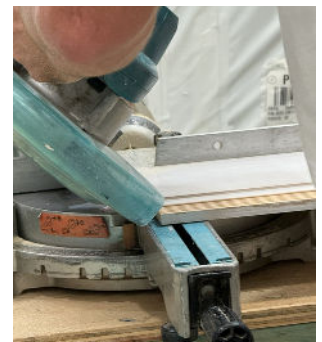
- Example door jamb calculation for an 820mm wide door:
 - Door leaf width = 820mm
 - Clearance between door and jamb = 3mm each side (6mm total)
 - Door jamb thickness = 22mm each side (44mm total)
 - Additional tolerance = 3mm each side (6mm total)
 - Total external door jamb clearance: $820 + 6 + 44 + 6 = 876\text{mm}$
 - Frame opening should be another 10mm (886mm) to allow for packing
- Mark this width centrally on the floor within the framed opening.
- These marks become the skirting termination points and control final door jamb alignment.

**STEP 2: INSTALL UPPER SKIRTING SECTION BEFORE PLASTERBOARD****Cutting & Set-Out**

- Keep upper and lower sections together when cutting.
- Cut between door opening termination points and internal and external corners. Use 45° mitres at corners.
- For straight joins, use splice joints. Butt joints are not acceptable.

Positioning

- Place a floor thickness packer under the skirting equal to the finished floor thickness.
- Position lower section loosely on top of the packer.
- Insert a 10mm spacer into the groove between upper and lower sections of skirting to maintain consistent groove alignment.
- Fix the upper section only.
- **Fixing requirements:**
 - Timber frame: nail or screw
 - Steel frame: screw only
- **Fixing centres:**
 - Fix at every stud - maximum 600mm centres
- **Minimum fixing requirement:**
 - 1 screw or 2 nails per stud through ribbed section
- Leave the floor thickness packers in place and temporarily position lower skirting section while plasterboard is installed and joints are set and finished.

**IMPORTANT:**

- Do not permanently fix the lower skirting section at this stage
- Upper skirting section must be fixed to framing, not plasterboard
- Accurate set-out is critical for final jamb alignment
- No noggins are required

STEP 3: INSTALL PLASTERBOARD

Once upper section installation is complete, install plasterboard sheets down onto the top edge of the skirting.

- Ensure:
 - Tight, flush contact between plasterboard and skirting
 - No visible gaps that may affect final finishing or shadow lines
 - Sheets are straight, plumb, and flush
- Fix plasterboard to framing as per the manufacturer's specifications..
- Before fixing sheets, confirm final door jamb widths and heights align with the previously marked jamb positions.
- Extend plasterboard sheets 50mm past the finished door opening on all sides and top. This overhang allows accurate trimming and a clean, flush finish once door jambs are installed.

Do not cut plasterboard back to frame or jamb lines at this stage.



STEP 4: SET PLASTERBOARD & SKIRTING JOINT

Before setting, brush down the ribbed top section of the skirting to remove dust and debris.

- Set all plasterboard joints, including the junction where plasterboard meets the Nova Vita skirting profile.
- Jointing Requirements
 - Use FibaFuse or paper joint tape only – non-approved tape voids warranty
 - Position tape centrally within the joint
 - Bottom edge of tape must finish 5–10mm above the base of the ribbed section
- Apply plaster set and accessories strictly in accordance with the plaster manufacturer's instructions.
- Recommended plaster products:
 - USG Boral
 - CSR



IMPORTANT: CRACK PREVENTION

- To minimise cracking at the skirting and plasterboard junction:
 - Allow compound to fully dry between coats as per manufacturer specifications
- Typical drying times:
 - Approximately 24 hours in normal conditions
 - Up to 48 hours in cool conditions
- Do not rush coats
- Refer to USG Boral plaster instructions for full compliance.

STEP 5: INSTALL FLOORING & LOWER SKIRTING SECTION

- Once plastering is complete:
 - Remove the temporarily positioned lower skirting section
 - Install timber or tiled flooring
 - Reinstall lower skirting section
- Maintain:
 - 3mm expansion gap between skirting and floor
 - 10mm groove alignment maintained

Fixing Requirements - Lower Section:

- Fix into every stud as follows:
 - 90–135mm wide: min. 2 fixings per stud
 - 185–235mm wide: min. 3 fixings per stud
 - 285mm wide: min. 4 fixings per stud
- The base of the lower skirting may require planing or scribing to maintain both 10mm groove and 3mm expansion gap.
- Before painting, fill the expansion gap using a flexible paintable gap filler applied with a caulking gun.



IMPORTANT:

- Do not install the lower section until flooring is complete
- Maintain the full 3mm expansion gap
- Remove excess plaster from the lower section before reinstalling

STEP 6: DOOR JAMB ASSEMBLY & INSTALLATION

(After plasterboard, flooring, and lower skirting installation)

Install door jambs using the pre-established opening widths and skirting termination points.

- This ensures:
 - Correct jamb fitment
 - Flush alignment with Nova Vita skirting
 - Consistent junctions between wall, skirting and opening
 - Jambs are square, plumb and flush with finished wall surfaces



IMPORTANT:

- Do not alter door opening widths after skirting installation. Skirting position controls final jamb alignment. Inaccurate set-out may affect:
 - Door operation
 - Visual alignment
 - Final finish quality

Jamb Installation Notes

- Temporarily fix the two jamb components together before cutting to length to assist alignment.
- Cut mitres to top of stiles and ends of head jamb.
- Assemble mitres using PVA glue and nails or screws.
- Trim plasterboard opening to suit jamb size, allowing 3mm clearance around the internal jamb rebate (we recommend a Makita DSD180 or similar plasterboard cutting tool for clean, accurate trimming).
- Use packers on framing studs to install jambs plumb and square.

Jamb Assembly Sequence

- Nova Vita door jambs are a 2-piece system, so ensure you:
 - Install the rebate/grooved component first by sliding it into the plaster opening from the door side of the wall and fixing to the framing studs
 - Install the second component from the other side of the wall where the tongue of this piece should slide into the groove of the first jamb component

Door Hardware

- Once jamb installation is complete, doors are ready to hang.
- Recommended hinges:
 - Herline
 - Fast Fix (offset knuckle)
 - Concealed hinges - small thickness body to suit 22mm thick jamb, eg: CEAM door hinge (CEAM-BAC1230S)
- A long-lip striker is required to suit the wider rebate detail.

