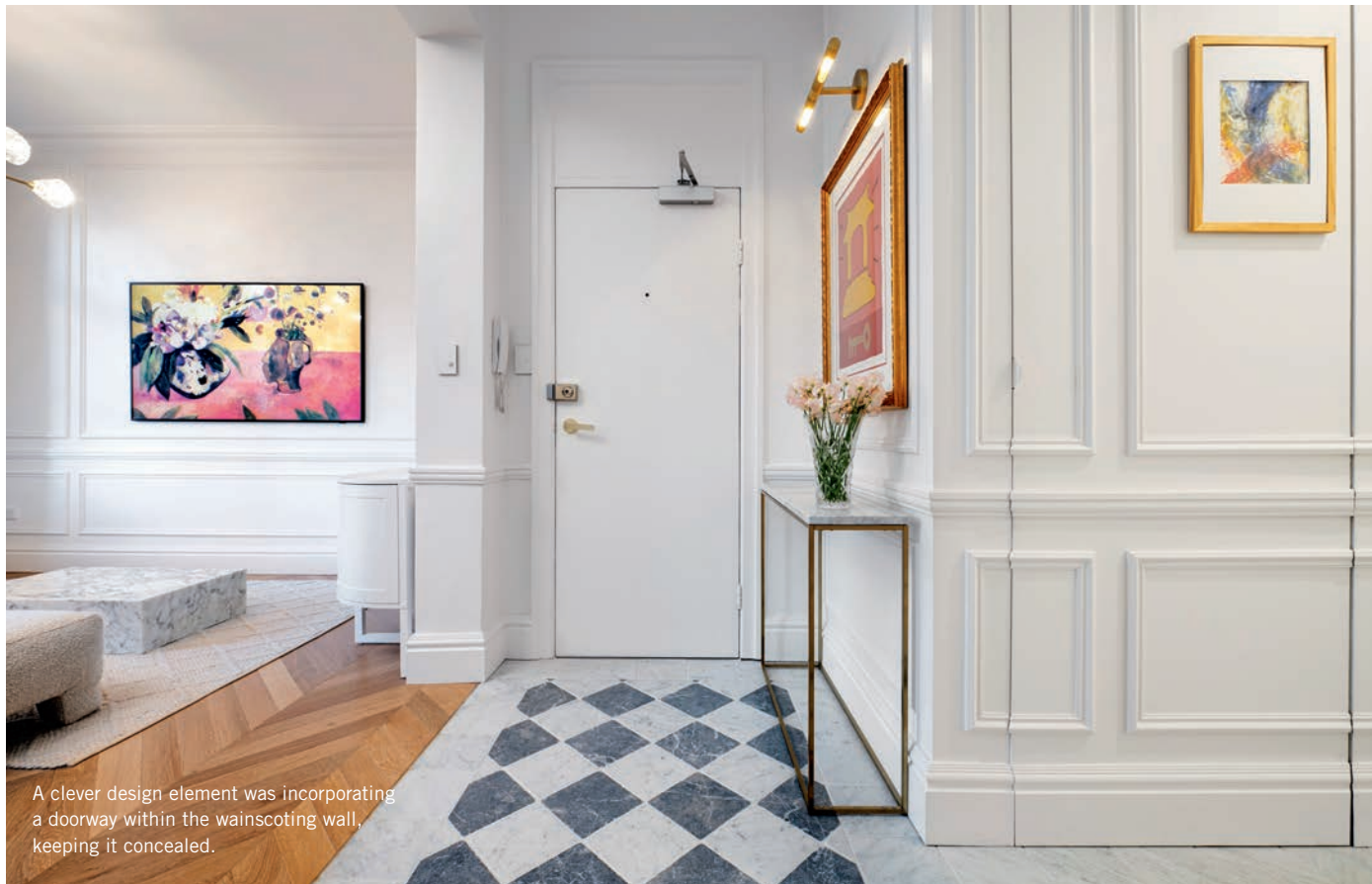


From Paris to Potts Point

THIS CHIC PARISIAN-INSPIRED HOME IN SYDNEY'S POTTS POINT SHOWS JUST WHAT CAN BE ACHIEVED IN A SMALL SPACE.

Old meets new in the chequerboard marble floor tiles at the home's entrance.

Photos: Imbens Media



The inner-Sydney suburb of Potts Point is renowned for its magical mix of Victorian, old Colonial and Art Deco architecture, not to mention the locale's trendy cafes, restaurants and bars. This two-bedroom, two-bathroom home needed a renovation befitting of its location.

Upon entering the front door, you feel as if you've been transported to Paris. Classic Hamptons details are evident throughout the open-plan living space. This was achieved by accentuating the 3.1m-high ceiling with elegant wainscoting, high skirting boards and lime-washed oak chevron flooring.

The detailing created by Akka design studio has been accentuated by layers of Intrim mouldings to enhance the feeling of elegance. The walls leading into the rooms are inspired by classic French design with wainscoting both top and bottom to create an elongated effect. There are beautifully laid black and white marble tiles on the floor, adding a modern monotone touch, while colourful pops of art tell a magical story.



PROJECTS



Layers of wall mouldings and wainscotting enhance the elegant Parisian ambience.

The stunning marble chequered tiles and herringbone floorboards add much-needed warmth, while a modern lounge in a neutral tone and marble coffee table create a space that looks like it's come straight from a fashion house in Milan.

When styling a small, minimalist apartment, the emphasis is in the details such as that of the walls, while layers in soft furnishings and fabrics add depth and style. The curtains chosen frame the windows ever so softly without taking away from the view. Designer lighting captivates the eye and elevates the rooms, while the hardware and fixtures in brass on a black and white backdrop are sophisticated and timeless.

It is wonderful what you can achieve in a small space with thoughtful design. Keeping the flow from start to finish, it's the details that truly bring this home together. intrimmouldings.com.au



The herringbone flooring adds yet another dimension of texture to the home.



Project particulars:

Design: @akkaaus
Intrim Mouldings:
SK110 skirting boards and architraves
CR22 chair rail
IN23 inlay mould

Modern brass light fittings
make a stylish statement.