



LEFT A staircase is the perfect location to invest in statement wall detail.

When it comes to completing your Hamptons, there are certain details that will add the perfect finishing touches, taking it from a standard new build or renovation to a bona fide Hamptons masterpiece.

One of the major features of a Hamptons home is the timber mouldings. These are the skirting boards, architraves, wainscoting wall panelling (which includes inlay moulds, chair rails or dado rails), beads, trims, cornice mouldings, picture rails and elements such as skirting blocks, corner blocks, sill nosing and more. So how do you select these items to achieve your Hamptons vision? You engage the experts.

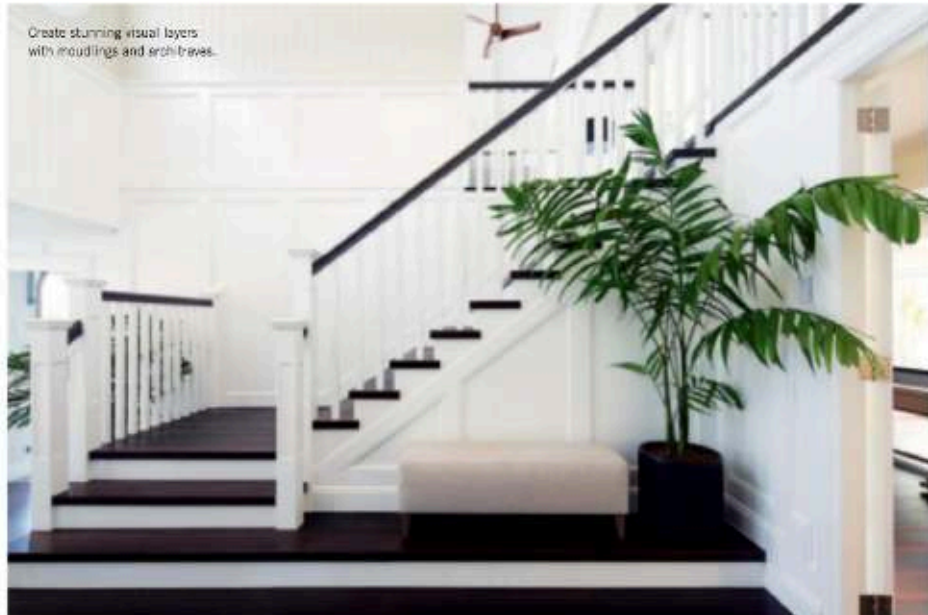
Founded in 1993 by the Quinsey family in Picton, NSW, Intrin has grown to become one of Australia's leading manufacturers of finely crafted, quality timber mouldings, skirtings, architraves and handrails for residential homes and commercial buildings. The company's customer base spans all sectors, from professionals such as architects, interior designers, builders and carpenters to homeowners themselves. Intrin is the brand that delivers spectacular interiors through its impressive range and first-class service.

The Hamptons style in Australia has evolved with classic, country, coastal, tropical and modern substyles. That is why Intrin has a design partnership with Natalie Bowen, the "Queen of Hamptons", to curate a collection of timber mouldings for each of these Hampton's styles in her new service, Selections In A Box. Taking the guesswork out of selecting moulding shapes, sizes and finishes, makes what can be an overwhelming decision into a simple and enjoyable experience. Select the style, and you will be presented with the recommended profiles to deliver the look.

Skirting remains Intrin's largest product category, and the trend of larger profiles and design options has been driven by savvy consumers and designers wanting to create bespoke interiors. Hamptons interiors demand decorative skirting profiles that are larger than the standard home design of 66mm or 90mm.

Timber trims

ADD VALUE TO YOUR PROPERTY AND DISCOVER WHY EVERY HAMPTONS HOME NEEDS THE RIGHT TIMBER MOULDINGS



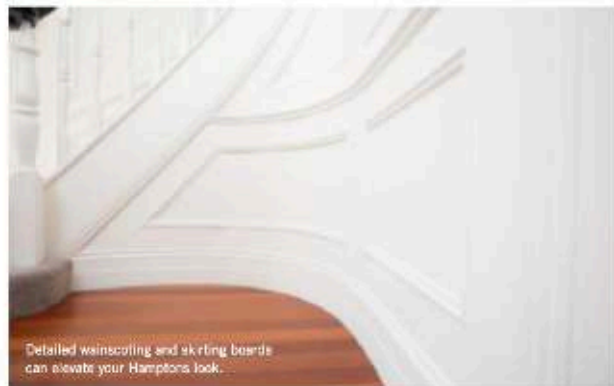
Create stunning visual layers with mouldings and architraves.

For all Hamptons designs, a 185mm skirting or larger is recommended. Team with 90mm or 116mm window and door architraves, layer in some skirting blocks, sill nosing and beading, and the windows and doorways suddenly become a Hamptons design feature. Size and scale are key considerations when selecting timber mouldings, so always check the recommendations for your ceiling and door heights. These details can be found on Intrin's website.

No Hamptons home is truly finished without wainscoting wall panelling. If you have a two-storey design, the staircase will be a major feature, and when finished with wainscoting wall paneling, it will be a beautiful Hamptons design.

Wainscoting can be full height or the lower third under a dado or chair rail. The option you select is down to your style preference and budget. If adding wainscoting to every room isn't in your budget, focus on areas such as the entrance and hallways, main living spaces, main bathrooms and master bedrooms for the biggest impact. The investment will add real value to your property.

Once you have selected the Hamptons timber mouldings to achieve your vision,



Detailed wainscoting and skirting boards can elevate your Hamptons look.

you can order samples via the Intrin website, and create your own flat lay to finalise your selections. Buying from Intrin is as easy as requesting a quote via the website or specifying your selection with your builder or carpenter. They then order directly with Intrin or via one of the nationwide distributors, depending on your site location. Your order is manufactured to your exact specifications and quantities in Intrin's

Australian production facility with state-of-the-art machinery to ensure first-class quality finish backed by a friendly service-focused team.

Intrin regularly shares its clients' projects on the website and through social media, so it is a great place to see how other homeowners have achieved their Hamptons vision using Intrin Timber Mouldings.

■ intrinmouldings.com.au | 1800 622 061

Refined elegance

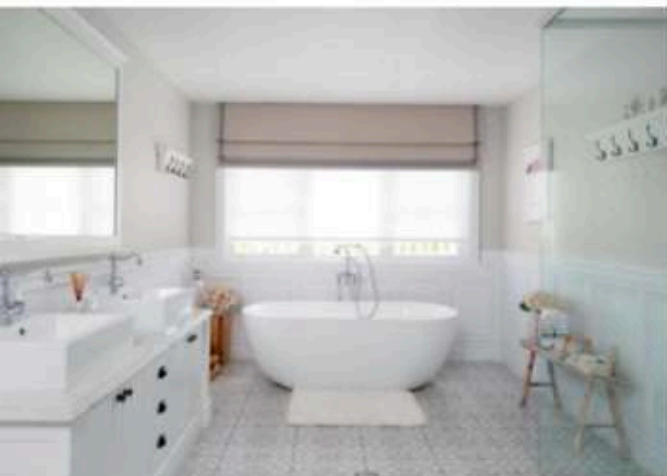
WAINSCOTING WAS AT THE TOP OF JODY AND MICHAEL'S WISH LIST WHEN THEY PURCHASED LAND UPON WHICH TO BUILD THEIR DREAM HOME, 90KM SOUTH-WEST OF SYDNEY



Timeless elegance is assured in every corner of this room.

Styled by: High Gate House

We have wainscoting in our entryway, living/dining room, formal lounge, hallway and all the bathrooms



ABOVE Clarity patterning from the encasitic lines along with the elegant texture of the inverted wainscoting create a timeless bathroom retreat. BELOW LEFT No corner is unworthy of attentive detailing, wainscoting can be customised to fit any size. BELOW RIGHT Roman blinds and nautical cushions with a pair of cans make for a classically coastal corner.



OPPOSITE TOP Exceptional selections and attention to detail are what makes a Hamptons home stand out from the rest. OPPOSITE BOTTOM French doors welcome the light in, while white and neutral furnishings keep the environment calm and relaxing.

In a small town 90km south-west of Sydney sits a stunning property now called Infinity House. The owners, Jody and Michael, purchased a 4,000m² estate block, on an old stud farm, to build a family home to live in with daughters Stephanie, 18, and Stacie, 12, and their beloved Cavoodle, Miss Lady.

From the onset, they knew they wanted to create a Hamptons-style home and were inspired by 2008 Hollywood rom-com *Something's Gotta Give*. "That house is to die for," Jody emphasises. "This is where I got a lot of my inspiration."

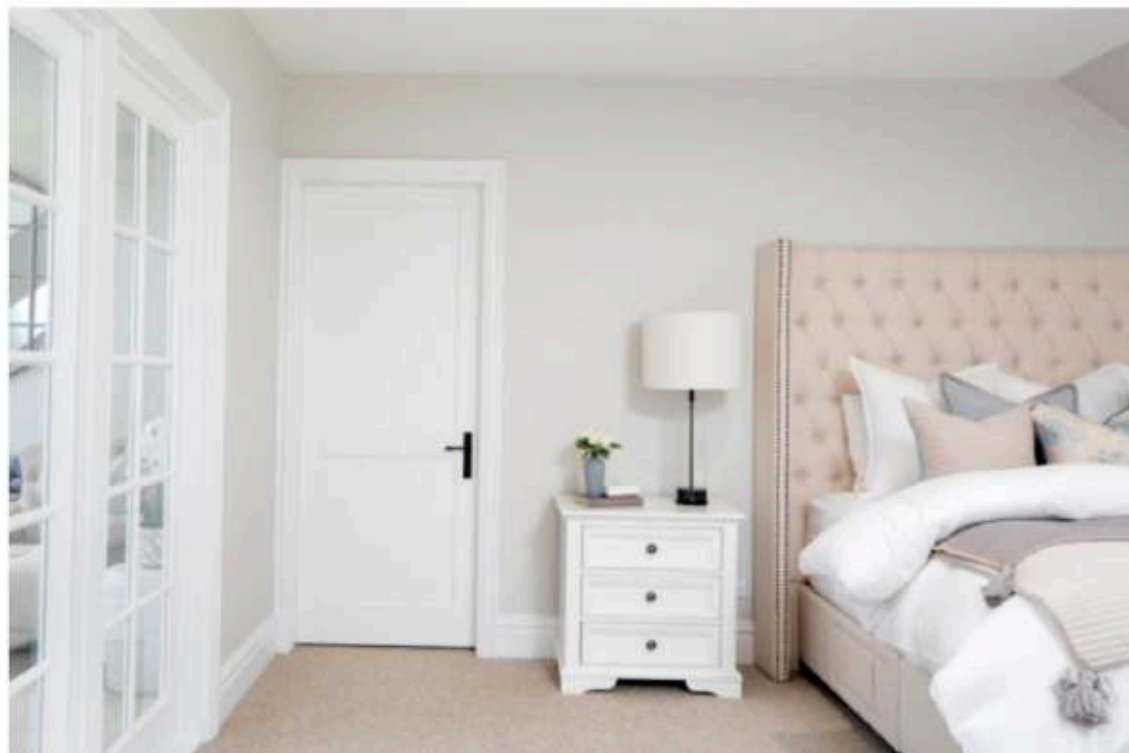
For Jody and Michael, wainscoting from Intrin Mouldings was at the top of their must-haves list. It is this feature that sets the home apart and solidifies the classic Hamptons aesthetic. "We have wainscoting in our entryway, living/dining room, formal lounge, hallway and all the bathrooms," Jody says. This adds a touch of elegance and highlights each space. Other must-haves include dark hardwood floors, coffered ceilings, an all-white kitchen with contrasting black hardware, a real wood fireplace with a grand mantle and a dedicated games room for Michael.

Jody knew that a Hamptons home has to be light and airy, and she achieved this by selecting a neutral interior palette of Taubmans Gazebo White with trims finished in Dulux Vivid White.

Jody styled her elegant home herself and added pops of colour through her favourite blue ginger jars, cushions, throws and wall art, as well as some fresh or artificial flowers in complementary tones. She added warmth to each space with timber hardwood floors and custom fabric Roman blinds. Now Jody says her favourite room in the house "would definitely have to be the formal lounge". Situated at the front of the home, it features five large windows that let glorious morning sun stream through the home.

"As most people do when they build their own home, we thought our home was pretty spectacular," Jody says. Infinity House brings such beauty to the local neighbourhood that people stop by on a daily basis to marvel at its magnificence.

■ intrinmouldings.com.au | 1800 622 081





A classic weatherboard facade in the perfect shade of grey with pops of white.

All in the details

IN THE EXCLUSIVE ESTATE OF CAMP HILL, IN EASTERN BRISBANE, SITS A TRUE HAMPTONS HAVEN

This home in Queensland's eastern Brisbane oozes street appeal. The little gated arbour invites you in, the no-fuss balustrading against the grey weatherboard cladding and adorable porthole details are all perfectly on-brand for a Hamptons home.

A wide hallway of crisp-white wainscoting and American oak floorboards in a herringbone pattern guides you to the main living areas. The sunken lounge and dining area are zoned with incredible coffered ceilings and extravagant cornice mouldings. The natural stone fireplace adds divine texture and warmth. Other elements of texture include the coffee table with a white exotic criss-cross pattern and tobacco bamboo occasional chairs with a unique ring design. The dining table features an ornate parquet top and deep-buttoned dining chairs.

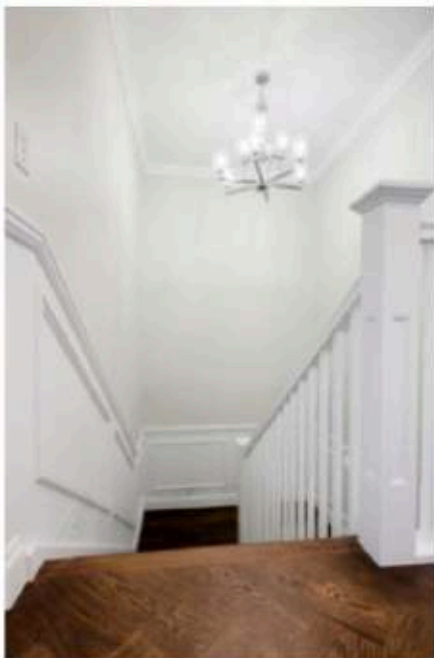
The kitchen really showcases this home's commitment to quality, with opulent Carrara marble finishes, state-of-the-art appliances, shiny nickel taps and hardware, as well as a generous scullery. These areas flow effortlessly into the alfresco entertaining pavilion, complete with an outdoor kitchen and a feature wall of the same natural stone as the fireplace within.



Perfectly classic, this kitchen will withstand the test of time.



Classic with a hint of tropical, this styling is simultaneously relaxed and elevated.

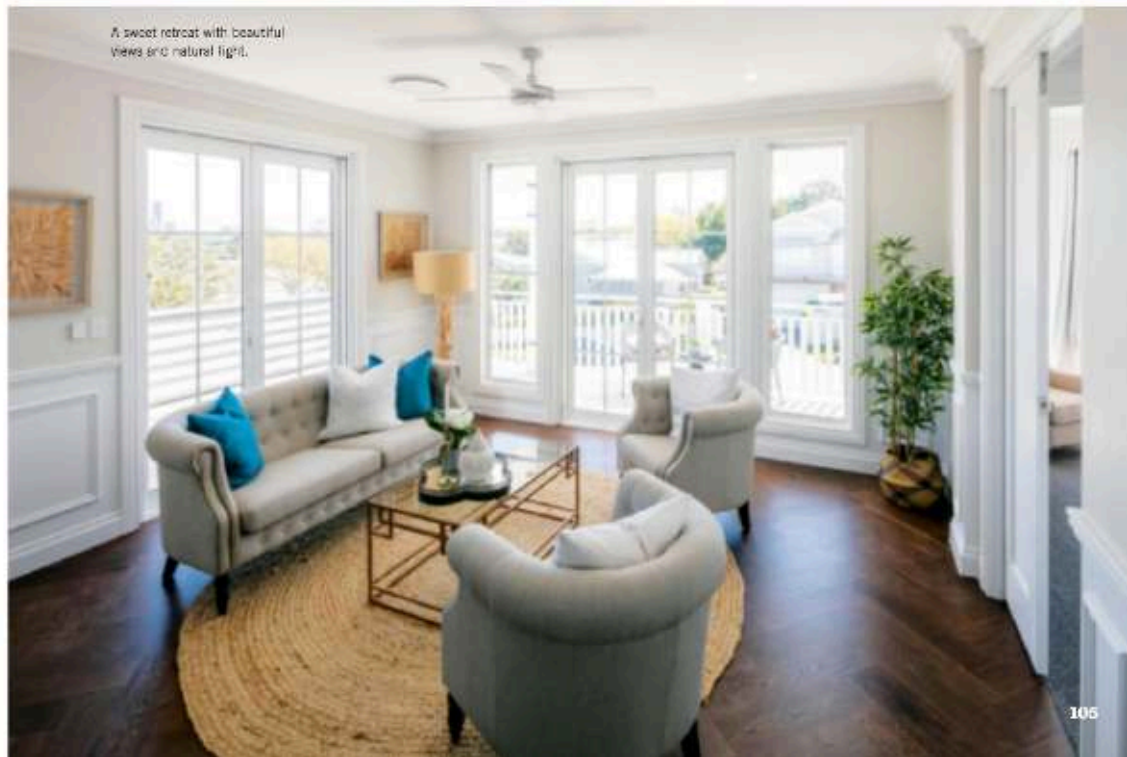


ABOVE Elements of tropical Hamptons styling bring texture and interest to this bedroom. **LEFT** Let wainscoting guide you from one space to another, tying all the areas together seamlessly.

Head upstairs, guided yet again by the exceptional wainscoting throughout, into a magnificent lounge area. Featuring a wet bar of Carrara marble and grey Shaker-style cabinetry, with a northern-facing balcony, this spot is an entertainer's delight and provides the perfect vantage point for Brisbane's magical sunsets and fireworks displays.

Boasting five bedrooms, with generous walk-in robes and floor-to-ceiling windows allowing ample natural light to filter inside. Fully tiled bathrooms with marble benchtops and heritage-style tapware and a freestanding bath complete the luxurious enclaves.

■ intrinremouldings.com.au | 1800 622 081



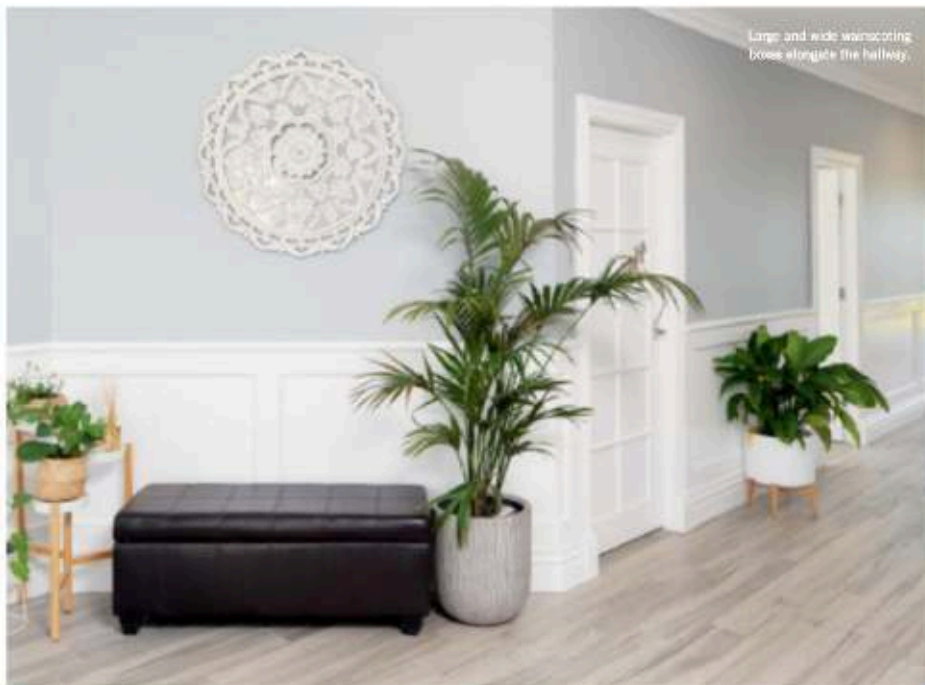
A sweet retreat with beautiful views and natural light.

A pitched entrance roof with weatherboard and stone cladding welcomes you home.

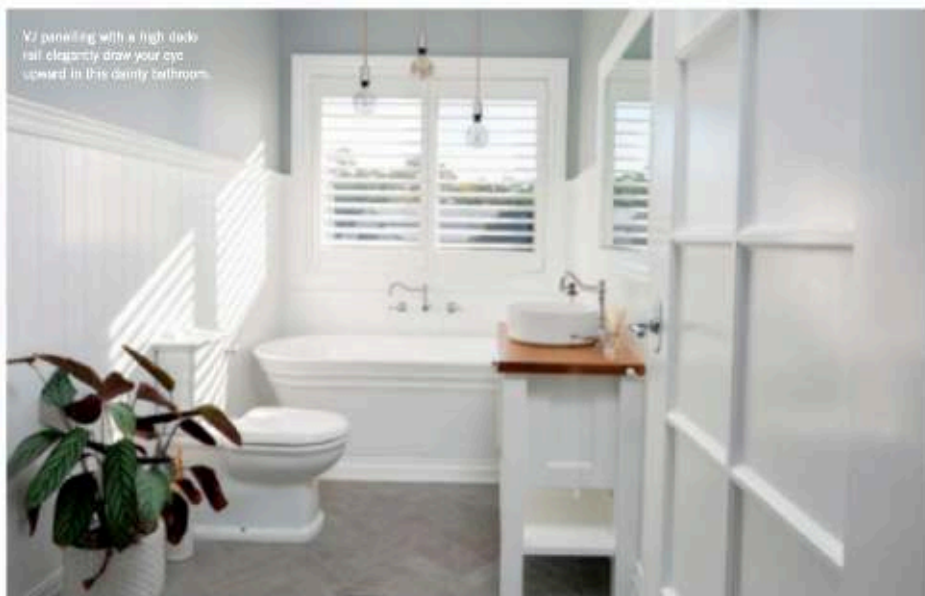


X marks the spot

SITTING UPON 18 ACRES IN THIRLMERE, NSW, THE JAMES ESTATE IS A TRULY SPECIAL DESIGN



Large and wide wainscoting boxes elongate the hallway.



VJ paneling with a high deck rail elegantly draw your eye upward in this dairy bathroom.



Natural light is capitalised on with this wide window showcasing sweeping views of the paddocks.

A breakfast bar with sweeping views of the paddocks provides even more bench space and a designated spot for the kids

Gary and Camilla had been envisioning their dream family home for many years and when the opportunity came to design and build it, they made sure it would be unique to them and suited to their family's needs. Gary and Camilla are parents to Beau, Landon and Aurora, as well as a bustling farmstead of goats and chickens and miniature Dachshunds, Arlo and Harlem. With a young family, they knew they would need a home that could grow with them. Sitting on 16 acres in the semi-rural town of Thirlmere, about 90km south-west of Sydney, the James Estate appears as an X from above, with four wings coming off the centre of the home. The main hall is 3m wide and stretches an impressive 24m long. For Camilla, being able to see all the way down from the front door to the back of the property through the large main hall was must-have when designing the home. Styled with Hamptons, French provincial and a touch of country style in mind, the home's colour palette is white and grey with a bold splash of navy blue throughout.

The home has five bedrooms, all complete with walk-in robes, and three full bathrooms. The kids have plenty of space to spread out and grow, with a library and their own playroom. Gary and Camilla's personal space includes a generous main bedroom with ensuite and walk-in robe. Camilla insisted on a full wall of glass in their ensuite, capitalising on the property's expansive views. Another priority for this family was a well-designed kitchen. "A pantry fit for a baker" was Camilla's request, with sliding French doors separating it from the main kitchen, it is now one of her favourite spaces in the home. A breakfast bar with sweeping views of the paddocks provides even more bench space and a designated spot for the kids. The herringbone splashback tile, now a gloss grey, was a last-minute change after Gary and Camilla decided their first choice of blue herringbone wasn't working. The grey tile was a stellar decision, complementing the wall paint above their cabinetry and the chrome tapware and light fixtures on their island. The family love the finished design and now have a home they can enjoy now and into the future. ■ intrinmouldings.com.au | 1800 622 081