

Instruction Manual

Intrim 800 Series Shadowline® System

NOTE: If using SK800FR Fire Rated Skirting, see separate instructions

1. Door Jamb Assembly

Cut DJ800 door jamb material to required lengths with a 45-degree mitre cut to the top of stiles and each end of the head.

Assemble the head and stile mitre joints with PVA glue and nails or screws.
(Detail A) (Refer to Figure 1)

2. Door Jamb Install & Fixing Skirting

Pack opening and install DJ800 door jamb plumb and level. Take care when installing jamb material, to make sure it is fixed parallel with timber framework. (example – if framework is 90mm wide and plasterboard is 10mm thick = 90mm frame + (2 x 10mm) 2 thicknesses of plasterboard + (2 x 3.5mm) 2 thicknesses of plaster set = 117mm total width of DJ800 door jamb, therefore the difference between timber framework face and door jamb face = $(117 - 90)$ divided by 2 = 13.5mm on both sides between the jamb face and framework face. (Detail B)

Once all DJ800 door jambs are installed, it is time to install the SK800 skirting.

Cut SK800 skirting to required lengths to fit neatly between door jambs and internal and external corners of framework. Cut SK800 skirting with 45-degree mitre cuts for internal and external corners.

SK800 Skirting must be nail or screw fixed to timber frame, and screw fixed only to steel frame, into every stud at a maximum distance of 600mm centres. (minimum of 2 fixings per stud up to 90mm wide, minimum of 3 fixings per stud for 135 to 185mm wide, and minimum of 4 fixings per stud for 235 to 285mm wide). These fixing points must include 1 fixing 20mm from base of skirting board and another fixing must be through the centre of ribbed section at top of skirting board. Install with 5mm packers between the bottom edge of skirting and floor to allow for any subframe movement. (Detail B) (Refer to Figure 2)

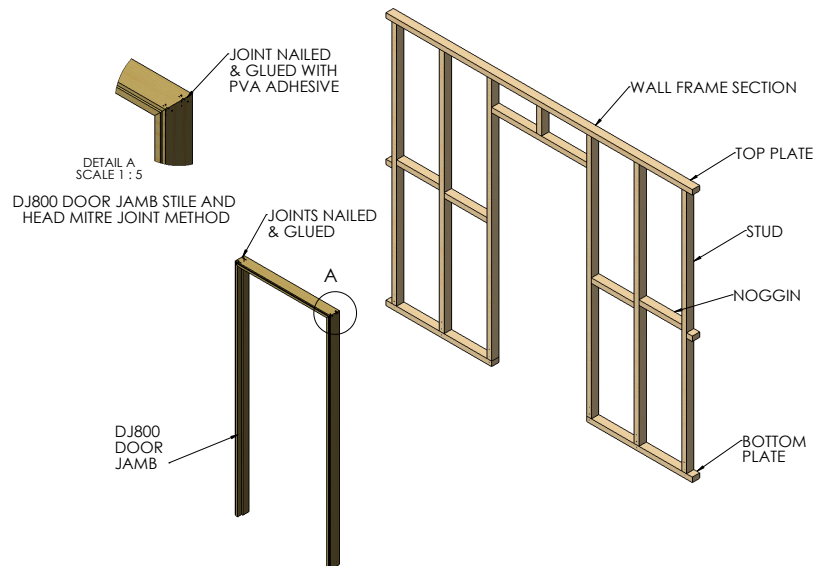


FIGURE 1 - DOOR JAMB ASSEMBLY DETAILS

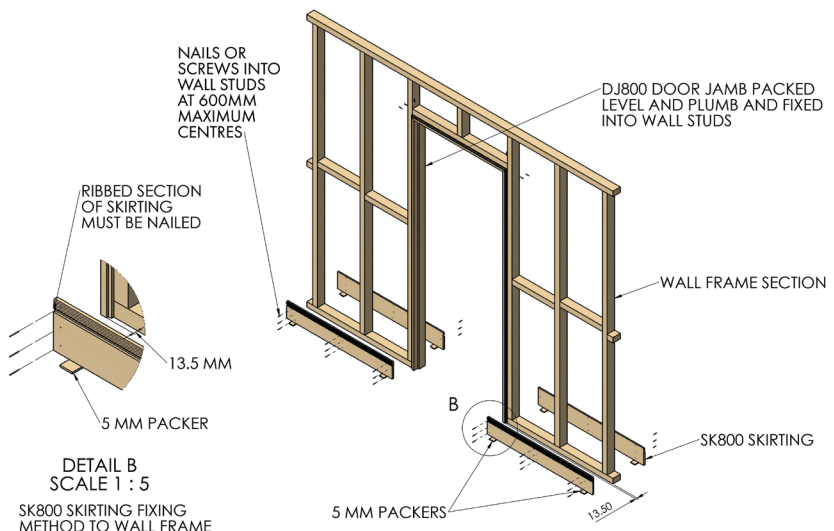


FIGURE 2 - SKIRTING FIXING DETAILS

NOTE: Above drawings must be read in conjunction with SK800 video on intrimmouldings.com.au and plasterboard manufacturer's instructions

3. Plasterboard Installation

Install plasterboard sheet to framework as per manufacturer's specifications. Cut and fit plasterboard sheet as close as possible to door jamb and skirting edges. Preferable to have the factory finish plasterboard edge sitting on the top of SK800 skirting edge. (Refer to Figure 3)

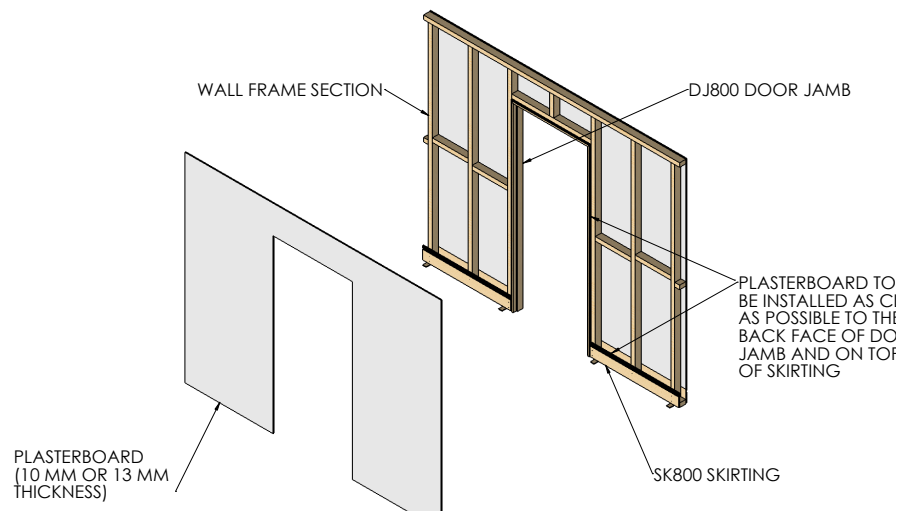


FIGURE 3 - PLASTERBOARD INSTALLATION

4. PVC Stop Bead Installation

Install all PVC stop beads (PLTB 630 – 30mm x 6mm tear off bead) to door jamb surrounds and metal perforated angles to external wall corners, taking care to cut the corners to a point to eliminate plaster material build-up. (Detail C) (Refer to Figure 4)

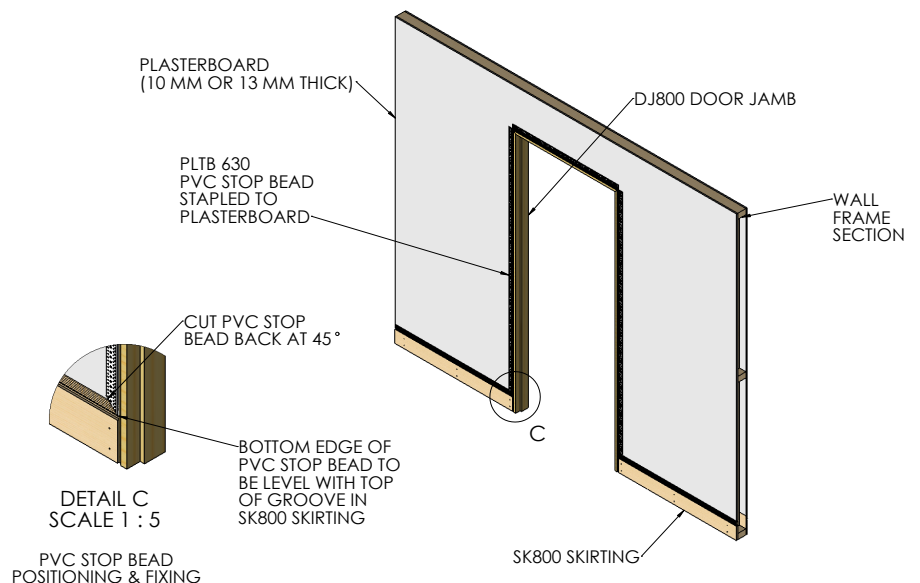


FIGURE 4 - PVC STOP BEAD INSTALLATION

NOTE: Above drawings must be read in conjunction with SK800 video on intrimmouldings.com.au and plasterboard manufacturer's instructions

5. Setting Skirting & Plasterboard Joint

Brush down the top ribbed section of the skirting to remove all dust prior to plaster setting. Set all plaster joints including the joint where the bottom edge of wall plasterboard sits on top of the shadowline® skirting, using FibaFuse or paper joint tape. (Any tape used that does not meet the recommended tape types will void all warranty). The tape should be positioned within the joint so the bottom edge of the tape comes within 5 – 10mm of the bottom edge of the ribbed section of skirting. All plaster set and accessories must be installed to manufacturer's specifications and instructions. (Refer to Figure 5)

TIP: To avoid the join between the skirting & plasterboard from cracking, you must allow the jointing compound to dry fully between coats as per the manufacturer's specifications and instructions. Drying times are approximately 24 hours in normal conditions or 48 hours in cool conditions between each coat. See USG Boral instructions [here](#)

6. Setting Door Jamb & Stop Bead Joint

Apply plaster set to PVC stop beads around door jamb surrounds. All plaster set and accessories must be installed to manufacturer's specifications and instructions. (Refer to Figure 6)

7. Finishing

Apply all coats of plaster set including top coats to all plaster joints and sand. Tear of PVC lip on stop bead around door jamb surrounds and it is now ready for painting. All plaster set and accessories must be installed to manufacturer's specifications and instructions. (Refer to Figure 7)

Australian Patent No AU2014100509

INTRIM HELPLINE

Phone Intrim
1800 622 081

E customer care@intrimgroup.com.au

▶ [Installation Video](#)

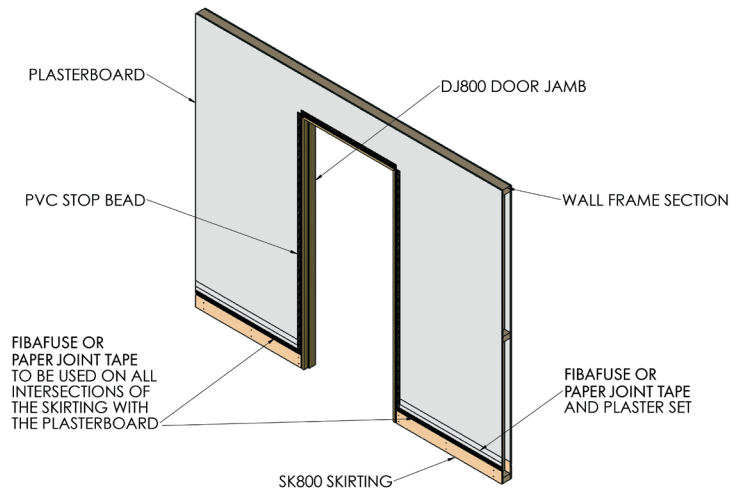


FIGURE 5 - PLASTER SETTING OF SKIRTING & PLASTERBOARD INTERSECTION

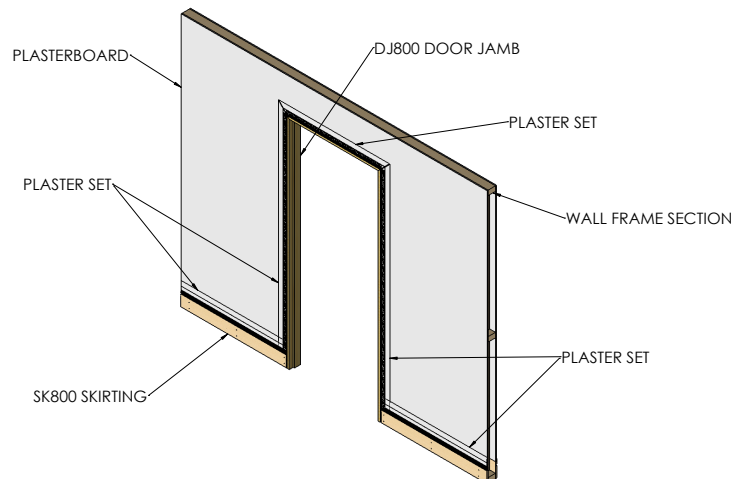


FIGURE 6 - PLASTER SETTING OF DOOR JAMB & STOP BEAD INTERSECTION

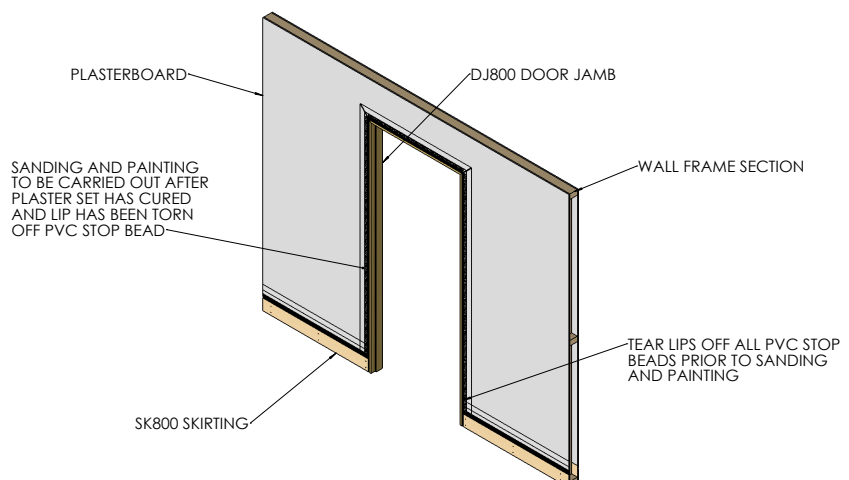


FIGURE 7 - FINISHING DETAIL

NOTE: Above drawings must be read in conjunction with SK800 video on intrimmouldings.com.au and plasterboard manufacturer's instructions