

# Instruction Manual

## Intrim 800 Series 2 Piece Skirting

### Shadowline® System SK801 and SK802

#### 1. Door Jamb Assembly

Cut DJ800 door jamb material to required lengths with a 45-degree mitre cut to the top of stiles and each end of the head.

Assemble the head and stile mitre joints with PVA glue and nails or screws. (Detail A) (Refer to Figure 1)

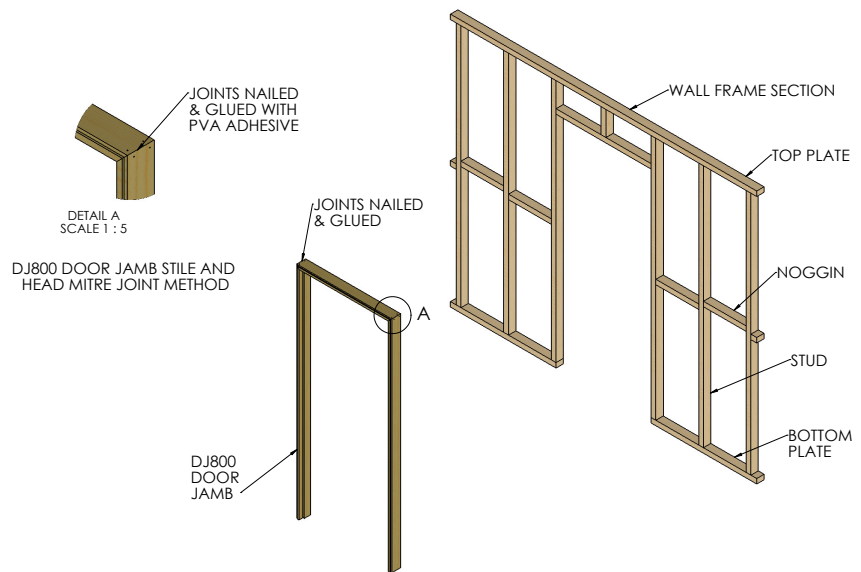


FIGURE 1 - DOOR JAMB ASSEMBLY DETAILS

#### 2. Door Jamb Installation

Pack opening and install DJ800 door jamb plumb and level. Take care when installing jamb material, to make sure it is fixed parallel with timber framework. (example – if framework is 90mm wide and plasterboard is 10mm thick = 90mm frame + (2 x 10mm) 2 thicknesses of plasterboard + (2 x 3.5mm) 2 thicknesses of plaster set = 117mm total width of DJ800 door jamb, therefore the difference between timber framework face and door jamb face = (117 – 90) divided by 2 = 13.5mm on both sides between the jamb face and framework face. (Detail B)

Once all DJ800 door jambs are installed, it is time to install the two piece SK801 and SK802 skirting. (Refer to Figure 2)

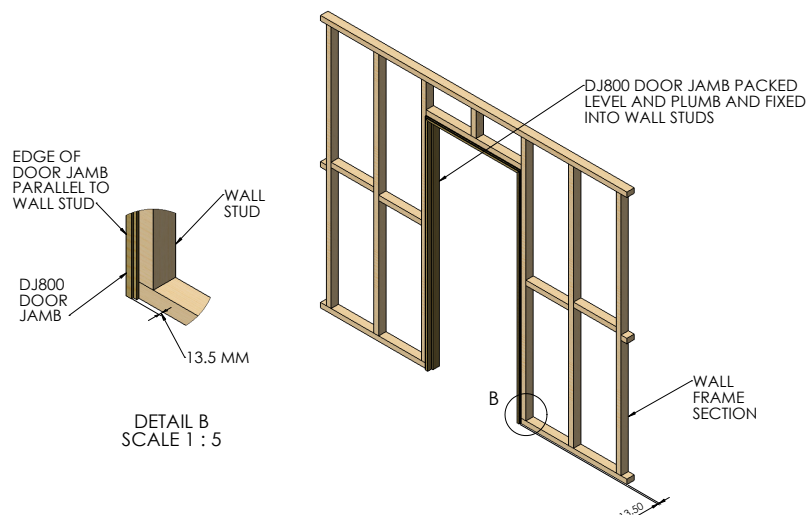


FIGURE 2 - DOOR JAMB INSTALLATION DETAILS

### 3. Installing Upper Skirting Section

Keep the two pieces of skirting together and cut SK801 (top portion) and SK802 (lower portion of skirting) to required lengths to fit neatly between door jambs and internal and external corners of framework. Cut SK801 and SK802 skirting with 45-degree mitre cuts for external corners and scribe joints for internal corners.

After cutting 2 pieces too long, keep the upper and lower portion together while installing.

When installing the 2-piece skirting, place a packer with the expected finished thickness of flooring on top of existing flooring and underneath the SK802 and place the SK801 on top, with a 10mm spacer in the groove between SK802 and SK801 to keep the groove consistent and fix the SK801 only in place. (Detail C)

SK801 Skirting must be nail or screw fixed to timber frame, and screw fixed only to steel frame, into every stud at a maximum distance of 600mm centres. Must be fixed with 1 screw or 2 nail fixings through the ribbed section.

As you remove the floor thickness packers from the underside of the SK802, it will now lower onto the existing floor material, leaving a large gap between the SK801 and SK802.

Temporarily tack or tape SK802 in place, until it is time to install the flooring.

Do not permanently fix the lower SK802 portion in place at this stage. (Refer to Figure 3)

### 4. Plasterboard Installation

Install plasterboard sheet to framework as per manufacturer's specifications. Cut and fit plasterboard sheet as close as possible to door jamb and skirting edges. It is preferable to have the factory finish plasterboard edge sitting on the top of SK801 skirting edge. (Refer to Figure 4)

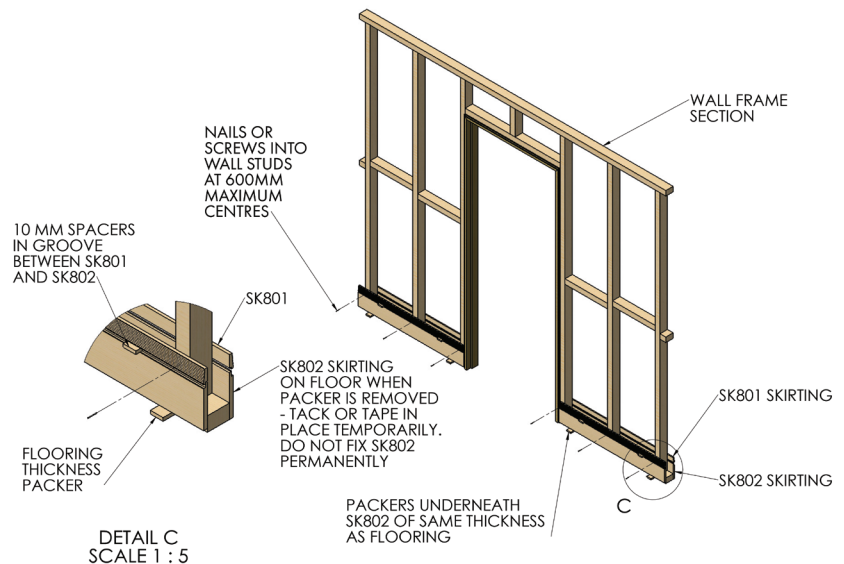


FIGURE 3 - UPPER SKIRTING SECTION FIXING DETAILS

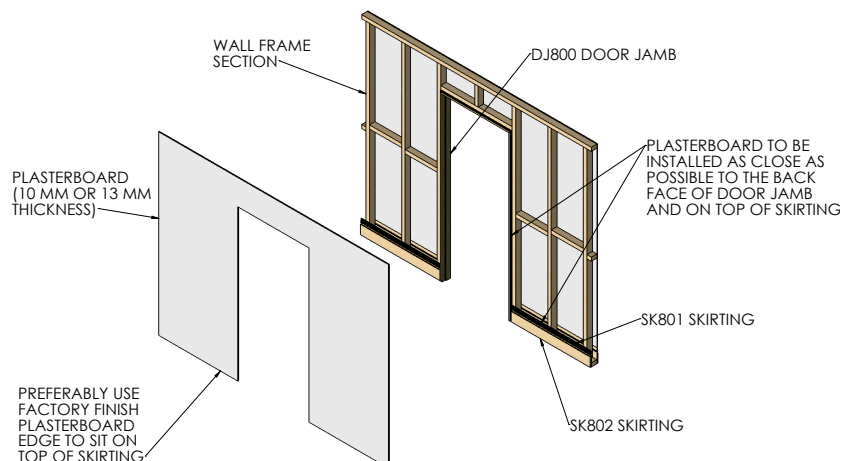


FIGURE 4 - PLASTERBOARD INSTALLATION

## 5. PVC Stop Bead Installation

Install all PVC stop beads (PLTB 630 – 30mm x 6mm tear off bead) to door jamb surrounds and metal perforated angles to external wall corners, taking care to cut the corners to a point to eliminate plaster material build-up. (Detail D) (Refer to Figure 5)

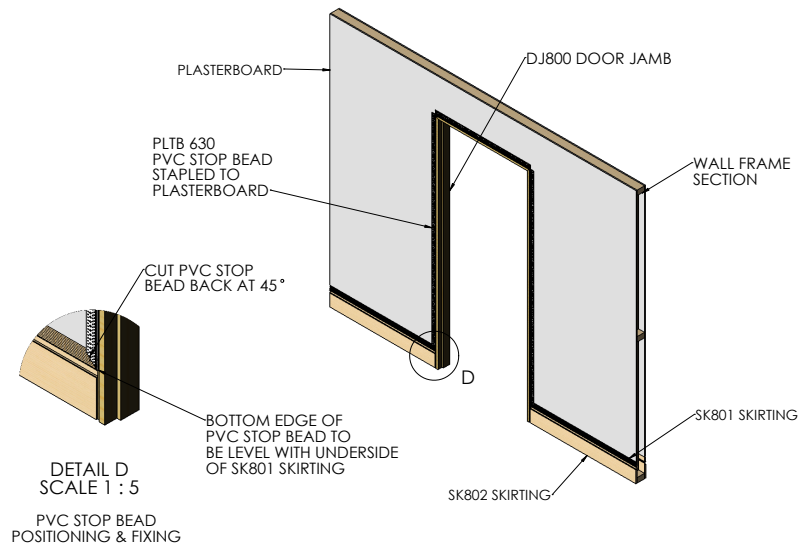


FIGURE 5 - PVC STOP BEAD INSTALLATION

## 6. Setting Skirting & Plasterboard Joint

Brush down the top ribbed section of the skirting to remove all dust prior to plaster setting. Set all plaster joints including the joint where the bottom edge of wall plasterboard sits on top of the shadowline® skirting (SK801), using FibaFuse or paper joint tape. (Any tape used that does not meet the recommended tape types will void all warranty). The tape should be centrally positioned within the joint so the bottom edge of the tape comes within 15 – 20mm of the bottom edge of the ribbed section of skirting.

All plaster set and accessories must be installed to manufacturer's specifications and instructions. (Refer to Figure 6)

**TIP:** To avoid the joint between the skirting & plasterboard from cracking, you must allow the jointing compound to dry fully between coats as per the manufacturer's specifications and instructions. Drying times are approximately 24 hours in normal conditions or 48 hours in cool conditions between each coat. See USG Boral instructions [here](#)

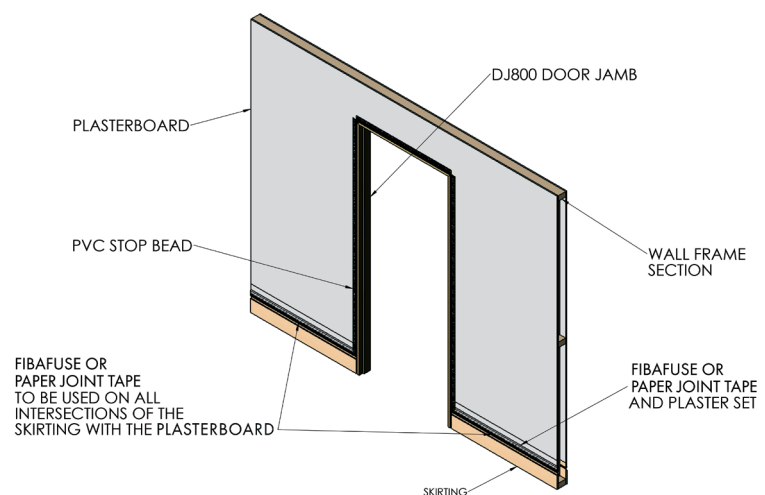


FIGURE 6 - PLASTER SETTING OF SKIRTING AND PLASTERBOARD INTERSECTION

## 7. Setting Door Jamb & Stop Bead Joint

Apply plaster set to PVC stop beads around door jamb surrounds. All plaster set and accessories must be installed to manufacturer's specifications and instructions. (Refer to Figure 7)

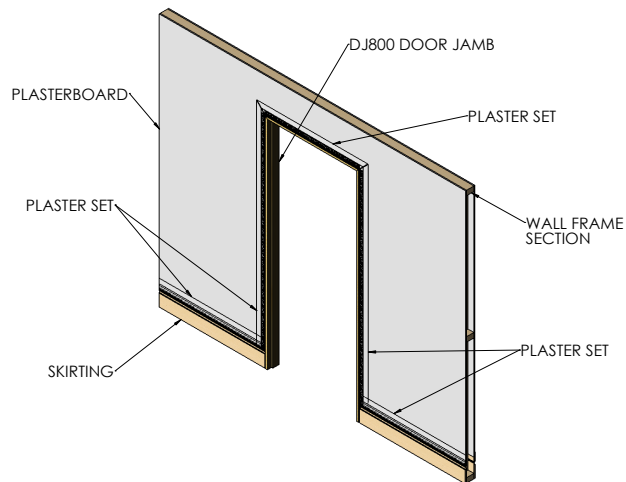


FIGURE 7 - PLASTER SETTING OF DOOR JAMB & STOP BEAD INTERSECTION

## 8. Finishing

Apply all coats of plaster set including top coats to all plaster joints and sand. Tear of PVC lip on stop bead around door jamb surrounds and it is now ready for painting. All plaster set and accessories must be installed to manufacturer's specifications and instructions. (Refer to Figure 8)

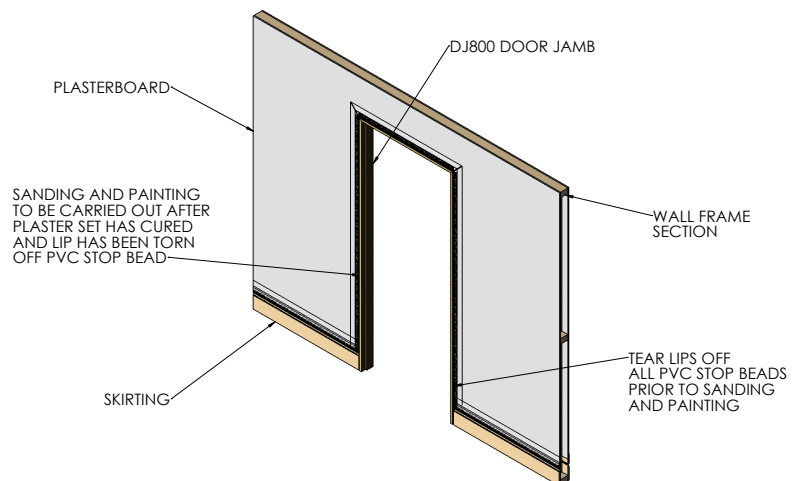


FIGURE 8 - WALL FINISHING DETAIL

## 9. Installing Lower Skirting Section

Remove the SK802 and install the flooring and replace the SK802 after and fix in place at every stud (minimum of 2 fixings per stud up to 90 to 135mm wide, minimum of 3 fixings per stud for 185 to 235mm wide and minimum of 4 fixings per stud for 285mm wide). The base of the SK802 may need planing or scribing to maintain the 10mm groove prior to fixing in place. The skirting is now ready for painting. (Refer to Figure 9)

**Australian Patent No AU2018101091**

### INTRIM HELPLINE

Phone Intrim

**1800 622 081**

E [customercare@intrimgroup.com.au](mailto:customercare@intrimgroup.com.au)

▶ [Installation Video](#)

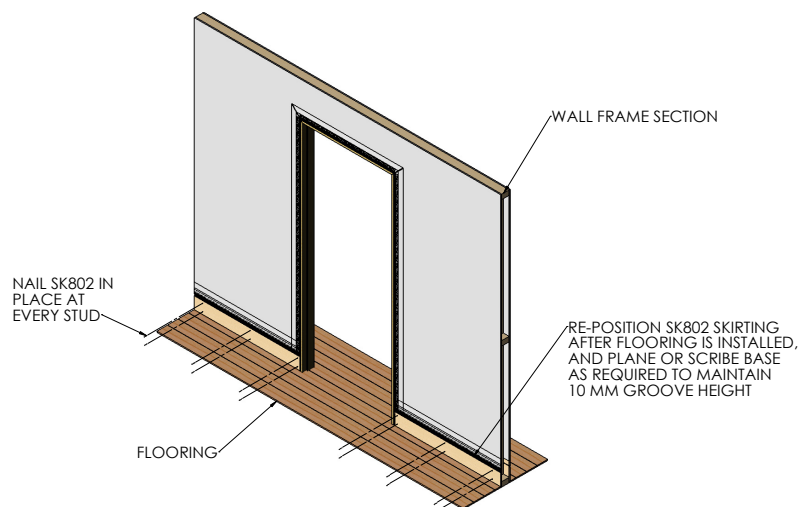


FIGURE 9 - LOWER SKIRTING SECTION FIXING DETAILS